



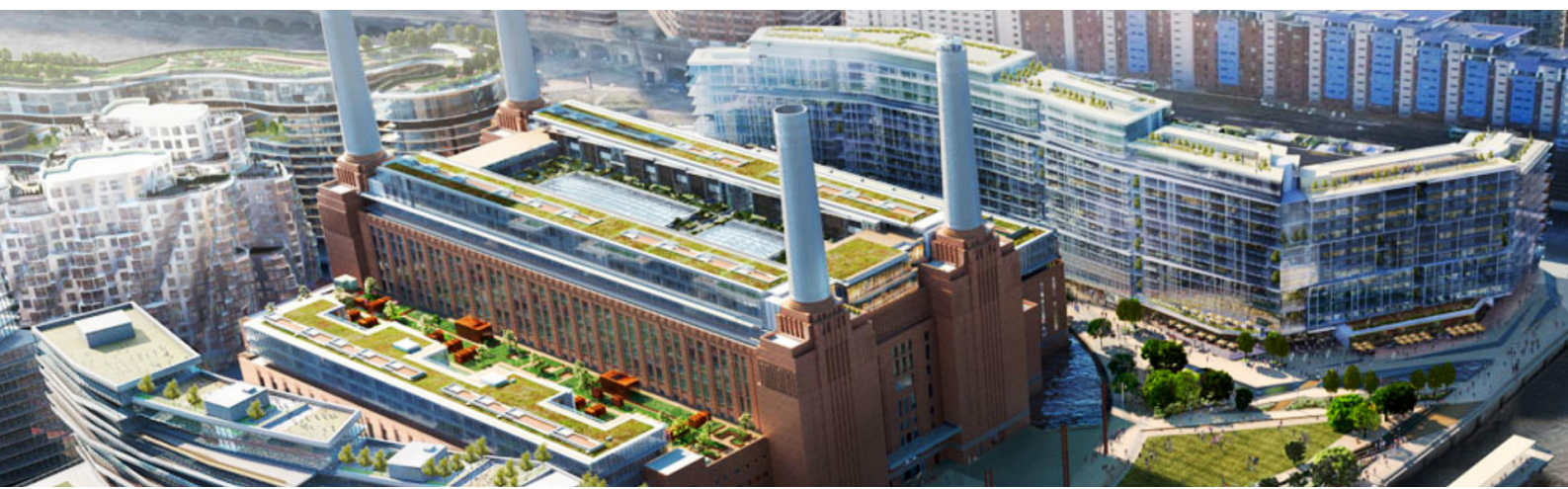
Case study: Convergint Partners with Genetec and Axis to Provide a Fully-Integrated Security System for Battersea Power Station

Battersea Power Station is one of the iconic buildings in London. When a decision was made to keep the façade and towers and create shopping malls, office space, and residential areas within it, it was clear that they would need a ‘best in class’ security system. After a thorough and challenging tender process, Convergint was chosen to provide this solution. The initial design was provided by the security consultant and Convergint were tasked with taking that design and making it work in practice across twelve floors and three basements.

Mission: Provide an enterprise-level security platform to support the management and security teams in the running of the project

The mission of this project was to provide an enterprise-level security platform to support the management and security teams in the running of Battersea Power Station. Set within a 42-acre site, the former industrial building was split into 4 main areas including 2 residential blocks, a shopping centre with over 250 shops, cafes and restaurants, and a commercial office which will be the new home of Apple in London.

Phase 2 of this project is the power station building itself. Convergint will provide a system of over 400 access control and alarm points and more than 550 Axis Communications cameras, as well as housing the estate’s main control room for a team of 9 supervisors and operators.



Solution: A unified access control, CCTV, and alarm handling solution

Following a layout design and tender led by QCIC design consultants, Convergent was selected and implemented their in-house design team to create the working design for the system, including cabling routes, centralised panel locations, and detailed system schematics. Axis Communications was chosen to provide more than 550 CCTV cameras and the Genetec Security Centre platform was chosen to provide unified access control and alarm handling solution for the estate because of its flexibility and ability to scale with the development. Throughout the project, Convergent provided a full-time management team including project managers, site supervisors, technical and commissioning engineers, and up to 40 colleagues on-site at any time to ensure the project was delivered on time and fault-free.



Result: Improved safety with a fully-integrated Genetec Security System

Despite the COVID-19 pandemic and various other challenges, Convergent believes they have created the ‘best-in-class’ security system with the ability for future expansion for this project. This was done by utilizing Convergent’s talented team through many workshops, weekly trade-to-trade meetings, and on-site co-ordination/discussions.

Convergent has provided a fully-integrated Genetec Security System, that gives full Axis Communications CCTV coverage, controls access, and monitors intrusion across three basements (including car parking and loading/delivery areas), shopping malls, office space, and residential areas across a further twelve floors above ground. It allows the security staff to monitor, speak with, and control all areas of the building from their specifically designed security control room.

Offering high-security solutions across multiple verticals

Convergent and its partners work together to provide customers with high-level security solutions across all locations and verticals. To learn more about the solutions deployed in this customer case study, contact a Convergent expert today.