

Axis Powered by Genetec

Powering innovation



Synergis – Truly open access control

SARGENT
ASSA ABLOY



Something missing....



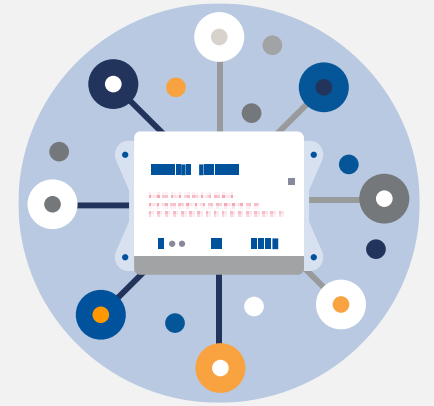
Sites with low
density of readers



Easy and quick
installation with low
maintenance

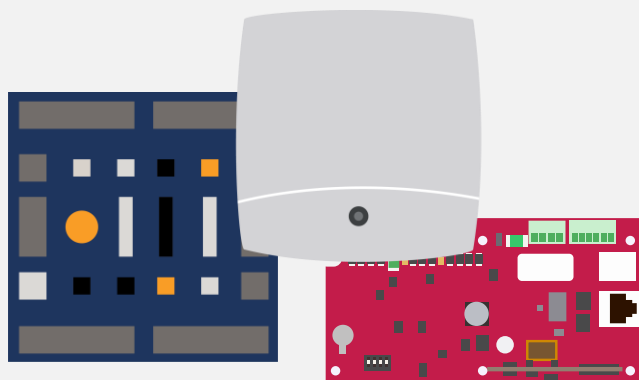


Intelligence even closer
to the door



Hardware diversification

Further expanding the Synergis ecosystem



New partnerships –
New potential architectures



Containerized architecture

POWERED BY

GenetecTM

Powered by Genetec

New way of bringing a solution to the market

i.e. loading Genetec software directly onto 3rd party devices

Non-exclusive business model

Axis is 1st but open to other partnerships

More options for
customers

Continuous delivery of
innovation

Ease of deployment
and maintenance

Computing at the edge

Door stations, speakers &
audio bridges



Deep, native camera
integrations

4K and radar device
integration



Body-worn cameras

A1001 & A1601 network
door controllers



VMD, ACAP and many
analytics events

QR code SDK integration for
Synergis and ClearID



ABC 123

VSaaS and Plate Reader
Cloud Integration



Axis Powered by Genetec



Axis Powered by Genetec

Industry-first offering combining Genetec Synergis™ access control software with the AXIS A1210 and AXIS A1610 network door controllers.

Offered exclusively through Genetec Certified^{pa} channel partners

Easy-to-acquire/ Easy-to-deploy/ Easy-to-maintain

Fast and continuous delivery of innovation and cybersecurity updates

AXIS –POWERED BY GENETEC

AXIS A16 & A12 Network Door Controller Series

**Advanced control for
TWO doors**

**4 x reader, 2 x relays,
6 aux IOs and
more..**

**Ready out of box –
indoor & outdoor
ready***

**Efficient control
for ONE door**

**2x reader, 1 x relay,
2 aux IOs and
more...**

**Compact design –
install it anywhere**



Note*: with custom enclosure

The product

Best of breed solution: Axis hardware pre-loaded with Synergis software

A1210 (1 door/2 readers) & A1610 (2 doors/4 readers)

Containerized architecture

Evolution of 3-tiered architecture that makes the most of computing power on the edge

Enterprise Capabilities

Offline logic, 250k cardholders, 150K events, OSDP, simplified unit management, 5.11.2+

Cloud ready

Suited for cloud and/or hybrid environments with secure connection to the cloud

Cybersecure

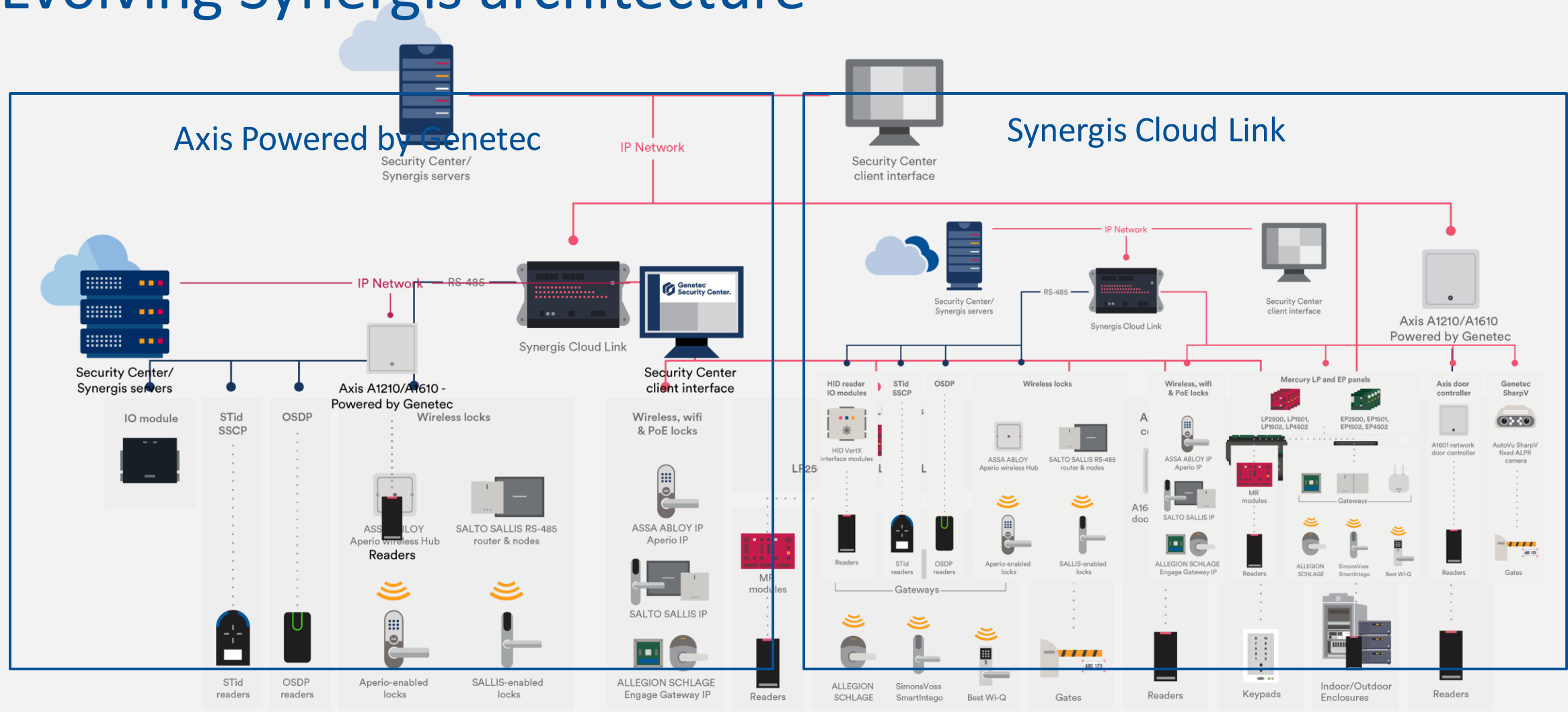
Built-in cybersecurity features at both the hardware and software levels

Not available at launch

Global APB, LPR credential, 3rd party integrations



Evolving Synergis architecture



Axis - Powered by Genetec architecture best suited for:



Multi-site – low reader density

- 20 doors and less per site
- IP to the door
- Limited installation space
- Easier to run IP cabling



Main Verticals

- Education
- Banking and financial institutions (branches)
- Health care & Retail
- Technology sector



Cloud first or hybrid access control solution



Partners and end users with preference for Axis devices

Synergis Cloud Link architecture best suited for:



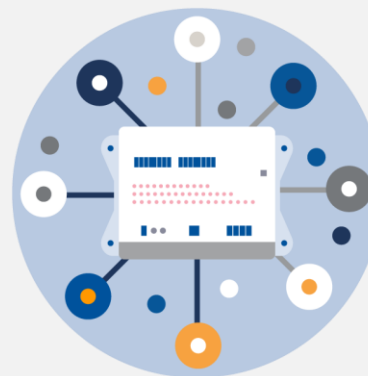
Large sites with high door density

- 20+ doors per site



Complex environments

- Interoperability between units
- Advanced logic
- Up to 256 readers



Variety of on-site openings

- Wider hardware ecosystem, including locks, ALPR, etc.

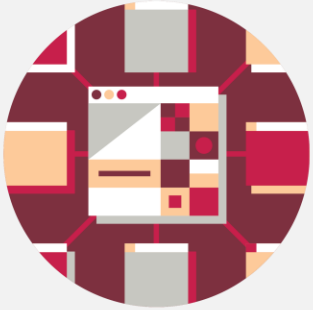


Multiple monitoring points

- Required across the site

Why should the market care?

Channel partners



All-in-one offering - quick and easy deployment and maintenance



Enterprise grade



Best of breed security organizations



Only available through Genetec Certified Channel Partners

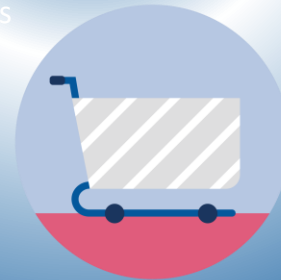
Channel & end users



Cybersecurity



More choices



Product availability

End users



Intelligence to the edge



Flexible and adaptable

How is this different from what the market is doing?

Best in breed solution

All-in-one solution
With 5 yr. warranty

Intelligence at the edge

(Plenum rated i.e. fire resistant when
enclosed in ceiling or wall)

Fully-featured

Non- proprietary

Easier to deliver & consume features

Time from development to
consumption is greatly reduced

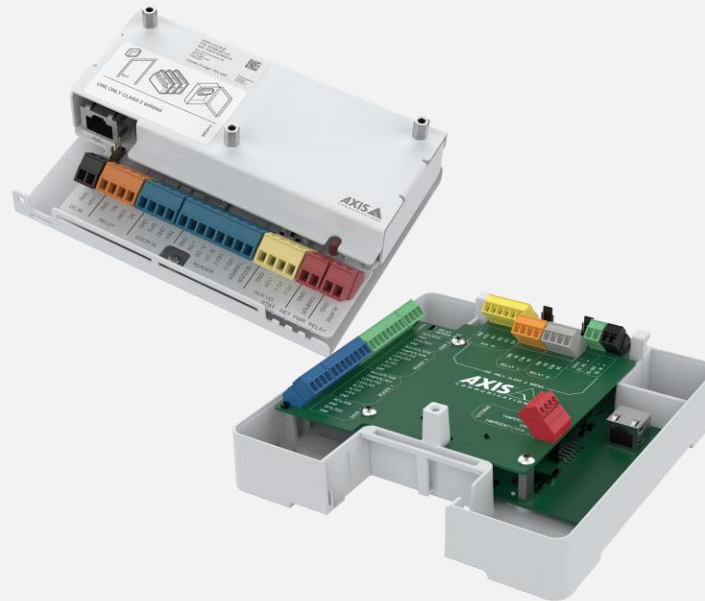
Cyber secure/ High security standards

No default passwords, TLS 1.3, use
of certificates

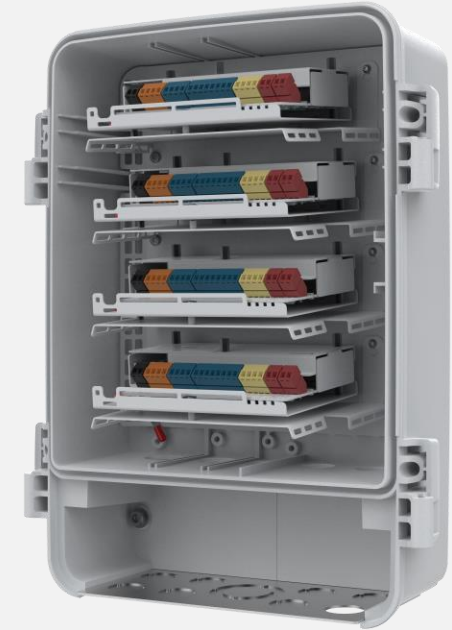
Axis Powered by Genetec door controller variances



A1610 & A1210
Powered by Genetec
unit with cover



A1210 & A1610
Powered by Genetec
Barebone version



A1214
Powered by Genetec
Stackable within cabinet

Axis - Powered by Genetec added value

	Axis A1210/A1610	Axis A1210/A1610 – Powered by Genetec
Offline decision-making capabilities	Basic	Advanced
On prem, hybrid and full cloud deployment	On prem or full cloud	On prem, hybrid or full cloud
Plenum space compatible	✓	✓
EAL6+ secure element and secure boot	✓	✓
Part of unified physical security solution in Security Center		✓
Easy installation and maintenance		✓
Scalable and central management of multiple sites		✓
Advanced Synergis features		✓
Fast delivery of new features and updates		✓

Thank you



© 2021-2022 Genetec Inc. All rights reserved. GENETEC™, OMNICAST™, SYNERGIS™, AUTOVU™, FEDERATION™, FLEXREADER™, STRATOCAST™, SIPELIA™, CITYWISE™, GENETEC CLEARANCE™, STREAMVAULT™, GENETEC RETAIL SENSE™, GENETEC TRAFFIC SENSE™, GENETEC AIRPORT SENSE™, GENETEC MOTOSCAN™, GENETEC CITIGRAF™, GENETEC MISSION CONTROL™, GENETEC CLEARID™, GENETEC PATROLLER™, COMMUNITY CONNECT™ and their respective logos are trademarks of Genetec Inc., and may be registered or pending registration in several jurisdictions. Other trademarks used in this document may be trademarks of the manufacturers or vendors of the respective products.